



# Trimble MX7

## MOBILE IMAGING SYSTEM

### ENTER THE WORLD OF MOBILE IMAGING

The Trimble® MX7 Mobile Imaging System with VISION™ technology, is a vehicle-mounted photogrammetric system that makes it easy to quickly and completely capture road and site infrastructure information. Capture 360-degree, 30 megapixel geo-referenced images at highway speeds to rapidly reduce project field time. Then, use Trimble Trident office software to extract and analyze your collected data. The Trimble MX7 is the ideal solution for organizations looking to enter the world of mobile imaging with a smaller investment.

#### Rapid Collection of Geo-Referenced Images

Capture a 30 megapixel panoramic image of the surrounding environment in static or mobile—up to highway speed—modes with the Trimble MX7. Equipped with six, 5 megapixel cameras and Trimble Applanix GNSS and inertial geo-referencing modules, the Trimble MX7 enables you to manage assets—such as bridges, buildings, roads, highways, and power stations—and document site conditions with geo-referenced images. This compact,

lightweight, and rugged sensor can be mounted on vehicles of all sizes.

System control and data recording functions are controlled wirelessly through any WiFi enabled PC or tablet device. Trimble Mobile Imaging Software is available with the system and offers a clear, intuitive user interface—making it easy to use—allowing the operator to rapidly set system parameters and manage data recording.

#### Capture Now, Measure Later

Avoid site rework and benefit from increased quality control and data validation by capturing the data now and measuring later. The Trimble MX7 allows you to visually observe and capture the job site, then produce deliverables in the office later using Trimble Trident and Applanix POSPac™ MMS software. For post-processing requirements, use Trimble's powerful Applanix POSPac MMS software.

Trident Imaging Hub software is available with the system and offers robust object positioning, measurement, data layer creation, and analysis of geo-referenced imagery. This powerful software gives you the ability to extract additional data and features without having to re-visit the site.

### Key Features

- ▶ Versatile system offers significant operational flexibility
- ▶ Six 5 megapixel cameras provide rapid 360-degree image documentation
- ▶ Precision positioning using tightly coupled GNSS and inertial referencing system
- ▶ Deploys on all sizes of on- and off-road vehicles
- ▶ Use with Trimble Mobile Imaging Capture software and Trimble Trident office software for data capture, extraction and analysis

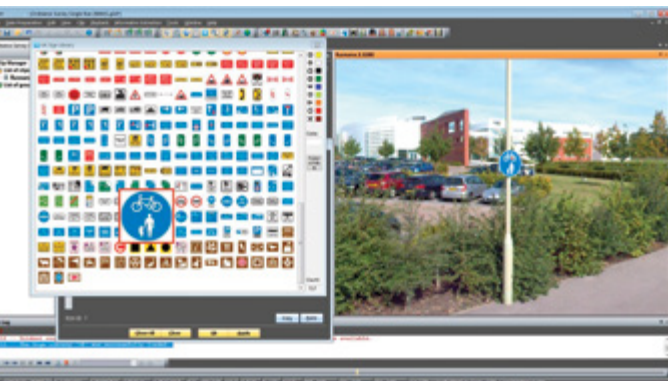
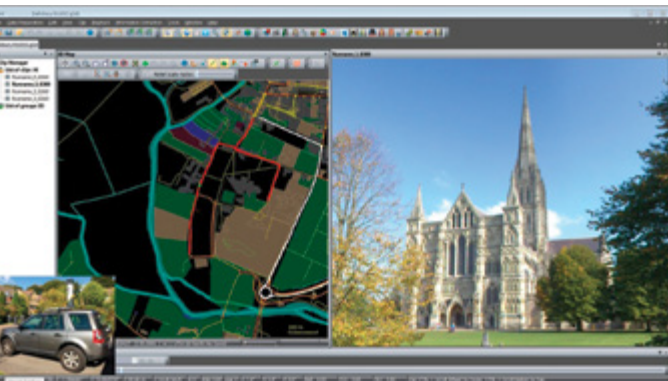


# TRIMBLE MX7 MOBILE IMAGING SYSTEM

## SOFTWARE

### Trimble Trident

- ▶ Trajectory import
- ▶ 360° imagery and vector data visualization
- ▶ Database connectivity
- ▶ GIS Layer Form creation
- ▶ Photogrammetric feature addition
- ▶ 3D measurements
- ▶ Attribute addition as of user selected snippets or object coding
- ▶ Image converter
- ▶ SHP/DXF import and export



## PERFORMANCE AND SPECIFICATION

System Specification	
Resolution	30 MP (5 MP x 6 sensors)
Field of view	90% of full sphere
Spherical distance	Calibrated from 2 m to infinity
Operating temperature	0 °C to +35 °C
Power	12 V to 24 V (typical 100 W)
Weight	9 kg

Positioning Sub-system (RMS Error) <sup>1</sup>	
Type	Trimble AP15 GNSS-Inertial System
Technology	Advanced Applanix IN-Fusion™ GNSS-Inertial integration technology
# of GNSS channels	220
Inertial measurement unit	Applanix IMU-69 (non ITAR) with 200 Hz data rate
Position (m): No GNSS outages <sup>2,4</sup> 1 km or 1 minute GNSS outage <sup>2,4</sup>	0.02–0.05 (post-processed) <sup>2</sup> 0.2–0.8 (post-processed) <sup>2</sup>
True Heading (deg): No GNSS outages <sup>2,4</sup> 1 km or 1 minute GNSS outage <sup>2,4</sup>	0.08 (post-processed) <sup>3</sup> 0.2 (post-processed) <sup>3</sup>

Options	
Analysis	Applanix POSPac MMS
Positioning	Distance measurement indicator (DMI)
Accessory	Mechanical height extender

1 Typical performance in a standard road vehicle with appropriate initialization and dynamics. Actual results are dependent upon satellite configuration, atmospheric conditions and other environmental effects.  
 2 Typical mission profile, max RMS error.  
 3 POSPac MMS.  
 4 With DMI option.

**CompassTools**  
Geospatial Solutions

[www.compasstoolsinc.com](http://www.compasstoolsinc.com)

Tools for accurate and effective geospatial data collection 800.728.5066 TOLL FREE  
303.627.1810 OFFICE  
888.766.2488 FAX

AZ • CO • MN • ND • NE • NM • SD • TX • WY  
LATITUDE 39° 35' 18.75282" LONGITUDE 104° 50' 43.75275"

Contact your local Trimble Authorized Distribution Partner for more information

**NORTH AMERICA**  
Trimble Navigation Limited  
10368 Westmoor Drive  
Westminster CO 80021  
USA

**EUROPE**  
Trimble Germany GmbH  
Am Prime Parc 11  
65479 Raunheim  
GERMANY

**ASIA-PACIFIC**  
Trimble Navigation  
Singapore Pty Limited  
80 Marine Parade Road  
#22-06, Parkway Parade  
Singapore 449269  
Singapore